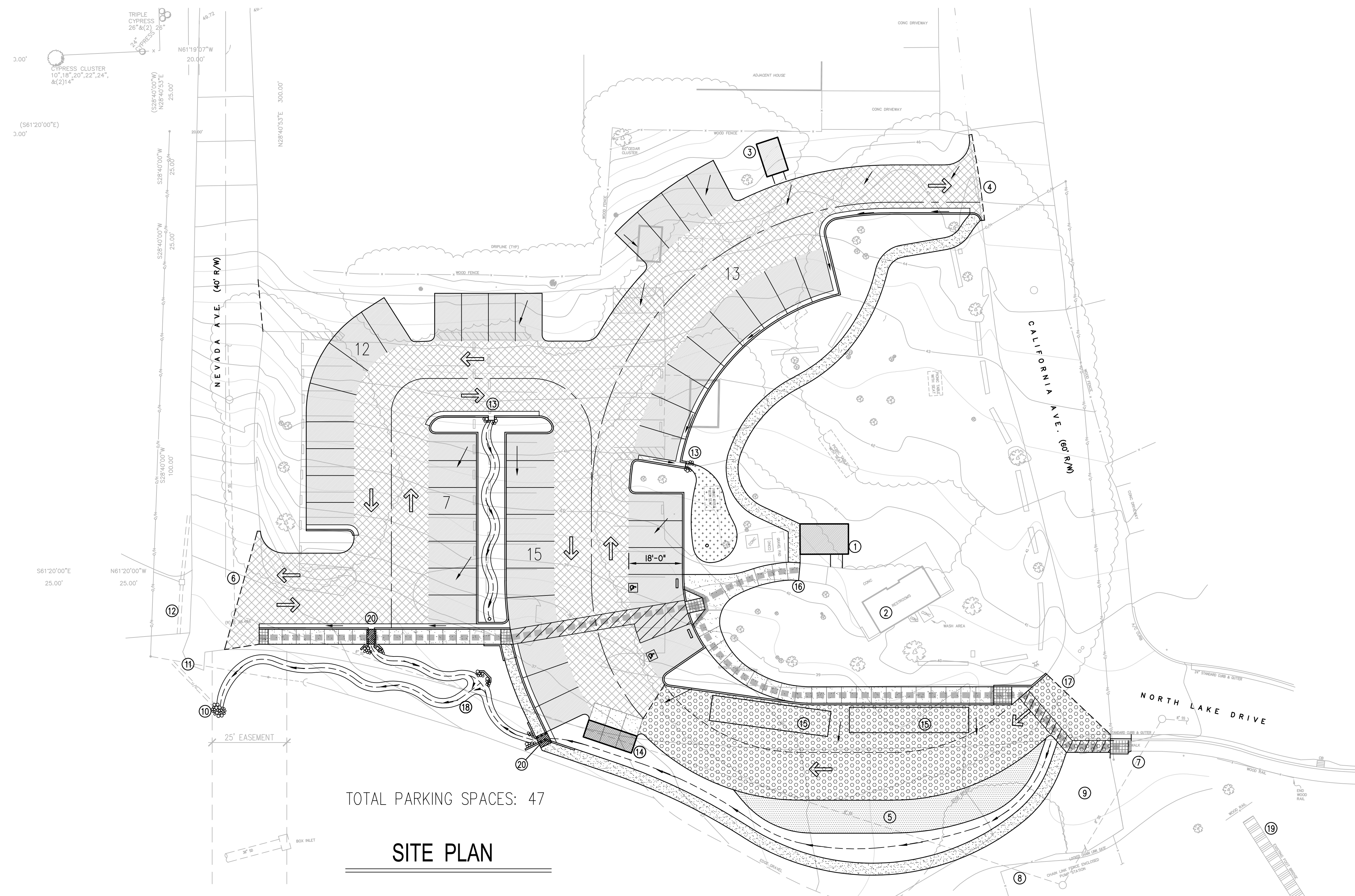
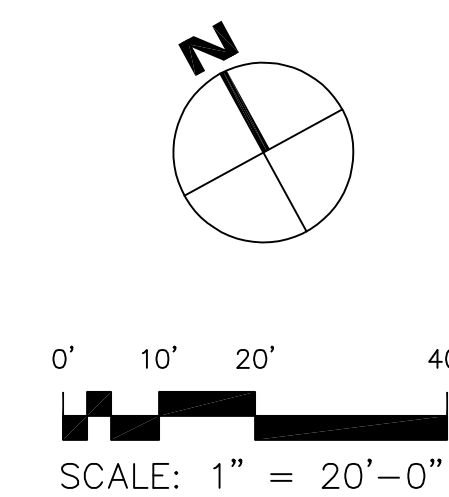


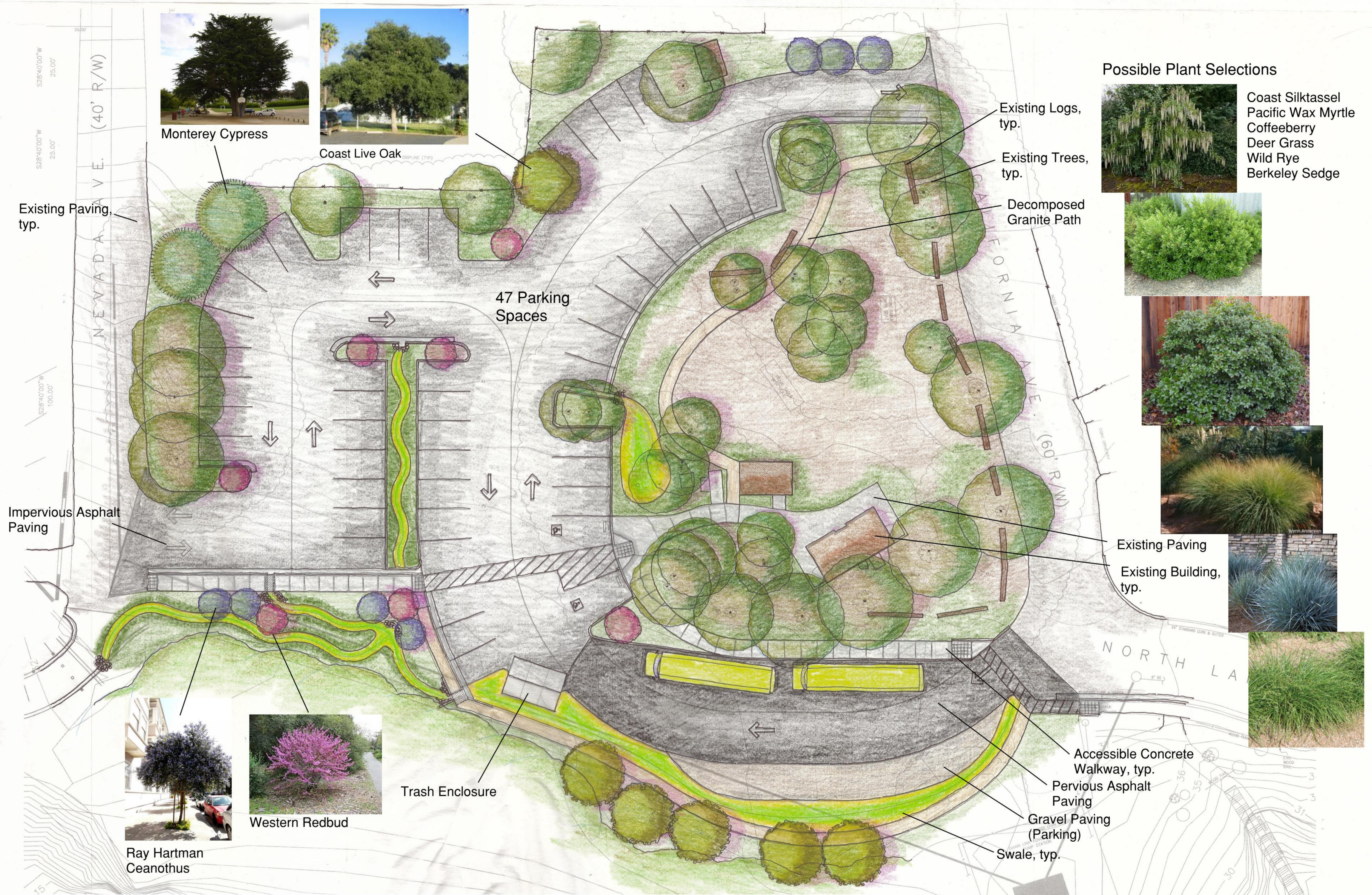
## LEGEND

- (SOLID LINES) PROPOSED INFORMATION
- (SCREENED LINES) EXISTING INFORMATION
- ▬▬▬▬▬▬ ADA PATH OF TRAVEL
- ▨▨▨▨▨▨ STRIPED CROSSWALK
- DIRECTION OF SURFACE DRAINAGE
- 13 PARKING STALL COUNT
- PARKING STALL: 9'x16' WITH 2' OVERHANG  
ACCESSIBLE STALL: 9'x18'
- ← PAVEMENT MARKING
- ▭ HMA PAVEMENT SECTION 2.5" OVER 8" CL 2 BASE
- ▨ HMA PAVEMENT SECTION 3.5" OVER 10.5" CL 2 BASE
- ▨ PERM. ASPH. 2.5" AC OVER 1.5" FILTER COURSE OVER 12" BASE WITH SUB-DRAIN & FILTER FABRIC
- ▨ 6" OF CRUSHED ROCK OR GRAVEL
- ▨ CONCRETE WALK
- ▨ DECOMPOSED GRANITE PATH
- RAIN GARDEN
- ~ BIO-SWALE

## KEY NOTES

- 1 RELOCATED RANGER STATION
- 2 EXISTING RESTROOM TO REMAIN
- 3 RELOCATED TOOL SHED
- 4 EXIT ONLY
- 5 OVERFLOW BUS & RV PARKING
- 6 TWO-WAY TRAFFIC ENTRY/EXIT
- 7 CONNECTION TO EXISTING SIDEWALK TO GET TO FOOTBRIDGE
- 8 EXISTING PUMP STATION
- 9 DRIVEWAY TO ALLOW ACCESS TO EXISTING PUMP STATION
- 10 OUTLET POINT FOR BIOSWALE
- 11 CONNECTION TO BEACH ACCESS PATH
- 12 EXISTING DRIVEWAY TO 201 NEVADA AVE.
- 13 CURB OPENING
- 14 NEW TRASH ENCLOSURE WITH ROOF
- 15 BUS PARKING (2)
- 16 CONNECTION TO EXISTING SIDEWALK
- 17 BUS AND AUTO MAIN ENTRY
- 18 BIOSWALE - WATER TREATMENT DEMONSTRATION / EDUCATION AREA
- 19 EXISTING FOOTBRIDGE
- 20 CURB OPENING WITH METAL PLATE OVER CHANNEL





- Possible Plant Selections**
- Coast Silk tassel
  - Pacific Wax Myrtle
  - Coffeeberry
  - Deer Grass
  - Wild Rye
  - Berkeley Sedge



Monterey Cypress



Coast Live Oak



Ray Hartman Ceanothus



Western Redbud

Trash Enclosure

Existing Paving, typ.

Impervious Asphalt Paving

47 Parking Spaces

Existing Logs, typ.

Existing Trees, typ.

Decomposed Granite Path

Existing Paving

Existing Building, typ.

Accessible Concrete Walkway, typ.

Pervious Asphalt Paving

Gravel Paving (Parking)

Swale, typ.

**Fitzgerald Marine Preserve Parking Lot Improvements - Concept A**

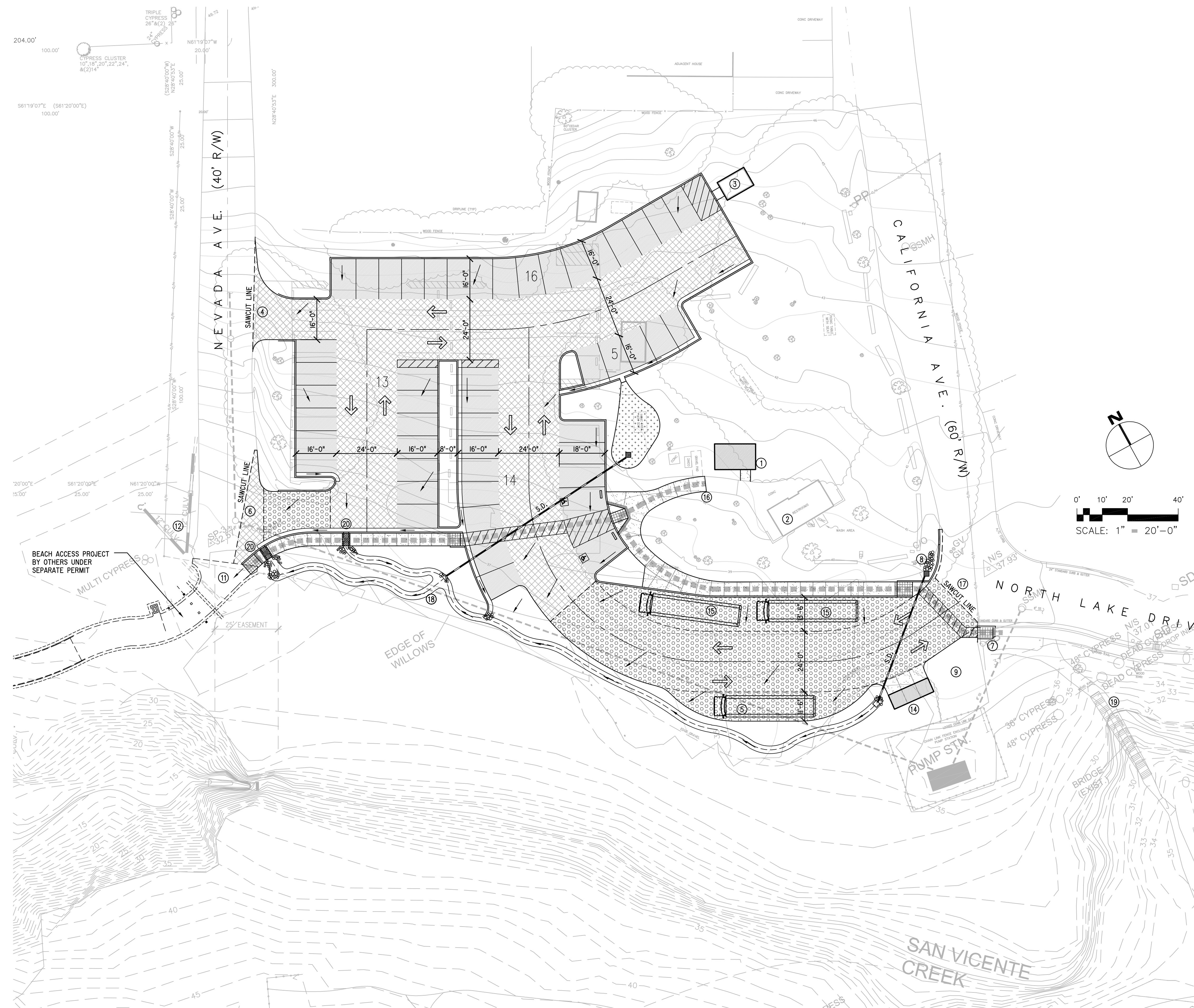
Moss Beach, CA  
March 26, 2012

**LEGEND**

- (SOLID LINES) PROPOSED INFORMATION
- (SCREENED LINES) EXISTING INFORMATION
- ▬▬▬▬▬▬ ADA PATH OF TRAVEL
- ▨▨▨▨▨▨ STRIPED CROSSWALK
- DIRECTION OF SURFACE DRAINAGE
- 13 PARKING STALL COUNT
- PARKING STALL: 9'x16' WITH 2' OVERHANG  
ACCESSIBLE STALL: 9'x18'
- ← PAVEMENT MARKING
- ▭ HMA PAVEMENT SECTION 2.5" OVER 8" CL 2 BASE
- ▨ HMA PAVEMENT SECTION 3.5" OVER 10.5" CL 2 BASE
- ▨ PERM. ASPH. 2.5" AC OVER 1.5" FILTER COURSE OVER 12" BASE WITH SUB-DRAIN & FILTER FABRIC
- ▭ CONCRETE WALK OR PAVING
- RAIN GARDEN WITH VEGETATION OVER SANDY LOAM OVER A SUBDRAIN
- ~ BIO-SWALE WITH VEGETATION OVER SANDY LOAM OVER A SUBDRAIN
- PROPOSED CATCH BASIN
- BUBBLE-UP STRUCTURE
- STORM DRAIN PIPES
- TOTAL PROPOSED PARKING SPACES: 48  
EXISTING PARKING SPACES: 39

**KEY NOTES**

- ① RELOCATED RANGER STATION
- ② EXISTING RESTROOM TO REMAIN
- ③ EXISTING TOOL SHED TO BE RELOCATED
- ④ ONE-WAY TRAFFIC EXIT ONLY
- ⑤ ADDITIONAL BUS & RV PARKING
- ⑥ ONE-WAY TRAFFIC ENTRY ONLY
- ⑦ CONNECTION TO EXISTING SIDEWALK TO GET TO FOOTBRIDGE
- ⑧ COBBLE TO SLOW RUNOFF BEFORE ENTERING CATCH BASIN
- ⑨ EXISTING DRIVEWAY TO ALLOW ACCESS TO EXISTING PUMP STATION REMAINS
- ⑩ OUTLET POINT FOR BIOSWALE
- ⑪ CONNECTION TO BEACH ACCESS PATH
- ⑫ EXISTING DRIVEWAY TO 201 NEVADA AVE.
- ⑬ CURB OPENING
- ⑭ NEW TRASH ENCLOSURE WITH ROOF
- ⑮ BUS PARKING (2)
- ⑯ CONNECTION TO EXISTING SIDEWALK
- ⑰ BUS AND AUTO MAIN ENTRY
- ⑱ BIOSWALE - WATER TREATMENT DEMONSTRATION / EDUCATION AREA
- ⑲ EXISTING FOOTBRIDGE
- ⑳ CURB OPENING WITH METAL PLATE OVER CHANNEL



Possible Plant Selections



- Coast Silk tassel
- Pacific Wax Myrtle
- Coffeeberry
- Deer Grass
- Wild Rye
- Berkeley Sedge



Monterey Cypress



Coast Live Oak



Ray Hartman Ceanothus



Western Redbud



Fitzgerald Marine Preserve Parking Lot Improvements - Concept B

Moss Beach, CA  
March 26, 2012

